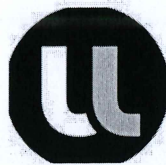




Art, Tech & Inclusion Summer Lab
June 13-24, 2026



**UNIVERSITÉ
DE LORRAINE**

ศูนย์ความร่วมมือนานาชาติ
รับที่ 500 ๓ ๘
26 มิ.ค. 2569
74.00 น.

Dear partner,

We are delighted to announce that the Université de Lorraine is offering a **summer school from June 13 to 24, 2026 in Nancy (France)**. The title is: **"Art, Tech and Inclusion Summer Lab"**.

This **all-English program** is open to all international students, with no prior knowledge required. Participation in the bootcamp earns **3 ECTS credits**.

The cost per student is **€900** for 11 days, including tuition fees, sports and cultural activities, local transport, accommodation, breakfast, lunch and 4 dinners.

You'll find all the information you need and the registration procedure at: <https://frenchbootcamp.event.univ-lorraine.fr/> as well as in the attached leaflet.
The registration deadline is March, 10.

Please pass on this information to your students and the various departments concerned. Don't hesitate to spread the word about this event on your social networks!

Thank you and we are looking forward to welcoming students from your university in June!

Best regards,

The bootcamp team.

drie-frenchbootcamp@univ-lorraine.fr

French Horizons Bootcamp

<https://frenchbootcamp.event.univ-lorraine.fr>

☒ ทราบ / แจ้งบุคลากรทราบ
☒ ประชาสัมพันธ์ทั่วไป
☒ มอบหมาย ... IT วิชา
☐ อื่นๆ ... Website ITC, kmUTNB
... เลขาวิชา ...
... E. Sarabin ...
.....
.....
(นางสาวพิมพ์พัลลภ มุสิกพันธ์)
ผู้อำนวยการศูนย์ความร่วมมือนานาชาติ
วันที่ 26 มิ.ค. 69



Price per student: 900€ including housing, breakfast, lunch, tuition fees, social & sports activities, local transport & 4 dinners (not included transportation to and from Nancy + 6 dinners

**13 | JUNE
24 | 2026
NANCY**

FRENCH HORIZONS BOOTCAMP ART, TECH & INCLUSION SUMMER LAB

3 ECTS awarded on completion

Considering the number of people who are affected by autism, around 15 to 20 percent of the world's population, it is society's responsibility to facilitate access to public resources and culture. In 2021, the non-profit organisation FRAME, for French American Museum Exchange, published a guide to help people with autism access museums. Museums in the city of Nancy are now part of FRAME.

THE PROJECT

In this ten-day summer program focusing on art and inclusion, participants will attempt to answer the question: how can museums be made more inclusive? Based in Nancy at Université de Lorraine's fab lab, the Charly Lab, you will work in teams to design a game playable inside a museum and accessible to all using 3D scanning and printing technologies, laser cutting, augmented and virtual realities. As well as learning to master these technologies, you will discover, through the bootcamp's excursions, the history and culture of the Lorraine region, the renowned Ecole de Nancy art movement, as well as innovative projects led by the Université de Lorraine and local associations, all of which will contribute to your final project.

The main goal of these sessions is to prototype a physical game for people with disabilities. Working in teams, you will create a game playable inside a museum. The game created will be a kind of escape game where the players solve puzzles and mechanics while going back and forth from one piece of art to another. Each session will be about how to materialise a concept you have in mind, from the idea to the physical object in your hand.

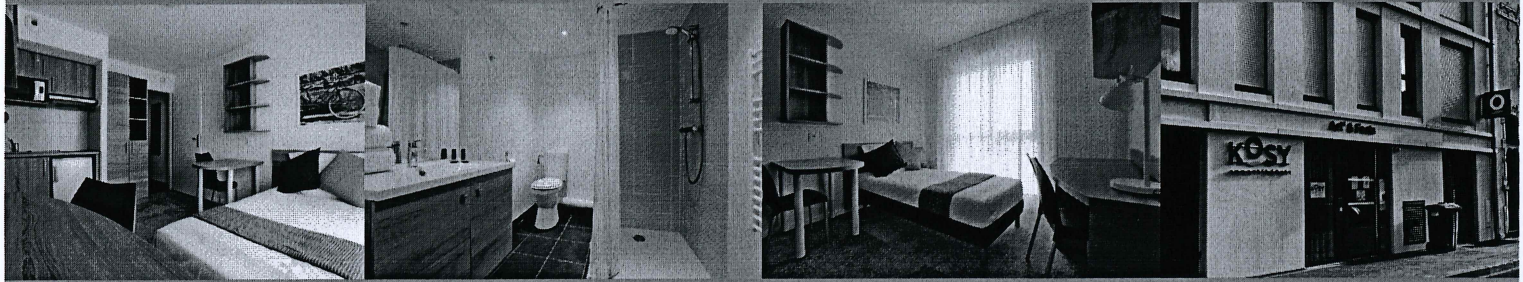


Place Stanislas - Nancy



HOUSING

Housing: brand new cosy residence, the Art&Facts Kosy Appart'Hotel, individual rooms with bathroom and kitchen. Distance to IUT: 15 min-walk. Distance to Nancy-city centre: 10 min by bus, 20 min-walk.



VISITS & ACTIVITIES

Participants will discover Lorraine, from the region's two main cities, Nancy and Metz, to the surrounding areas. Highlights include: a cultural tour of Nancy, the capital of Art Nouveau in France; a guided visit of the Musée de l'École de Nancy; an evening downtown at the Fête de la Musique; a visit to the Pompidou Center in Metz; a day trip to the beautiful Vosges mountains, including an afternoon at a treetop adventure park.



GENERAL INFORMATION

Registration deadline: 10 March 2026

Find out how to register on our website:


<https://frenchbootcamp.event.univ-lorraine.fr>

This program in English is open to all students and no special prior knowledge is required. A limited number of places available.

Contact:

drie-frenchbootcamp@univ-lorraine.fr

 Login

 [Lost password ?](#) [Create account](#)

[Main menu](#)

[Bootcamp](#)

[overview](#)

[The project](#)

[Nancy - The place
to be](#)

[Accommodation
and food](#)

[Travel](#)

[Fees/Register for
the bootcamp](#)

[2025 edition](#)

[FAQs](#)

[Download the](#)

[flyer](#)

[HELP](#)

[@ Contact](#)

FAQs

When does the French Horizons Bootcamp take place?

The bootcamp will take place from June 13th to 24th, 2026. You will need to arrive in Nancy on June 13th and make your way to the accommodation where you will be met by our team. You'll need to book your onward/return journey from Nancy on June 24th.

Who can apply for the Bootcamp?

Students in any field and of any level are welcome to apply. No specific skills are needed to participate in the bootcamp project. If you are interested in art, technology and inclusion and want to learn more about these topics while discovering the French joie de vivre, this is the bootcamp for you! You must be 18 years old and hold student status in your home country in order to apply.

What is included in the registration fees?

Registration fees include accommodation, breakfast and lunch for the duration of the bootcamp, as well as 4 evening meals and all the activities and excursions.

Is travel to and from Nancy included in the registration fees?

No, you will need to organise and pay for your own travel costs.

How do I get to Nancy?

If flying into Paris Charles de Gaulle Airport, you have 2 options to get to Nancy:
Option 1: High-speed train (TGV) direct from the airport to Lorraine-TGV, where you will use the shuttle bus to transfer to Nancy-Ville station.
Option 2: Hop on the RER B (Paris metro train) to Gare du Nord. Transfer to the Gare de l'Est (5 minutes on foot), then direct high-speed train (TGV) to Nancy-Ville station.

If flying into Luxembourg, take the tram from the airport to the main train station. There are regular connections (TER) from there to Nancy-Ville station.

Please note that in France, TGV train tickets must be bought in advance and access to those trains is restricted to ticket-holders. Tickets are available to buy

around 3 months before travel at the following site: <https://www.sncf-connect.com/en-en/> It is advisable to book a train 3-4 hours after your flight lands in case of delay.

What should I pack?

The weather in Nancy in June is usually fine with sunshine and temperatures anywhere from warm to hot. Nights generally get cooler, so make sure to pack a sweater. There is no need to bring too many clothes and get weighed down by a heavy suitcase as there is a laundry in the residence (to be paid on site).

Don't forget to bring an electrical adapter for charging your telephones and other devices.

Where will I be staying during the bootcamp?

You'll be staying in an individual studio in a student residence conveniently located next to a trolleybus stop and within walking distance of Nancy city centre. You'll find more information [here](#).

How much money will I need?

You will certainly want to bring some spending money with you to take advantage of the nightlife in Nancy and to take home some precious souvenirs! You will also need to pay for 7 evening meals. Card payments are accepted almost everywhere in France even for small purchases. Check with your bank about payment fees in foreign currencies.

Do I need a visa to come to France?

This will depend on your nationality. Please check the following link for information:

<https://www.france-visas.gouv.fr/en/web/france-visas/tourist-or-private-visit>

If a visa is necessary, apply for a tourist visa and not a student visa, as you will not receive a registration certificate from the Université de Lorraine.

How can I contact you if I have a problem?

If you have any questions prior to the bootcamp, you can contact us at the following address:


drie-frenchbootcamp@univ-lorraine.fr

We will also send updates via email. Once the bootcamp is underway, we will set up a Whatsapp group for easier communication.

CCSD...

[Privacy |](#)
[Accessibility](#)



 Loading...